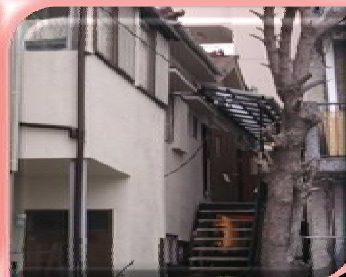
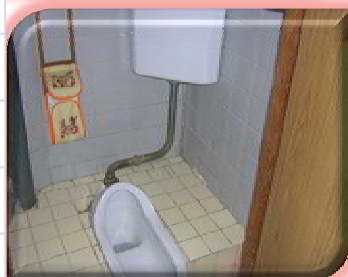
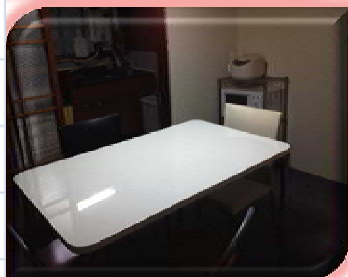
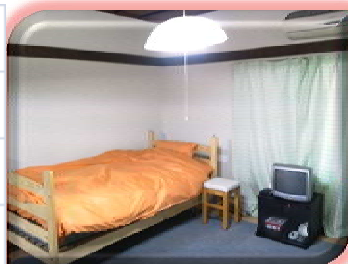
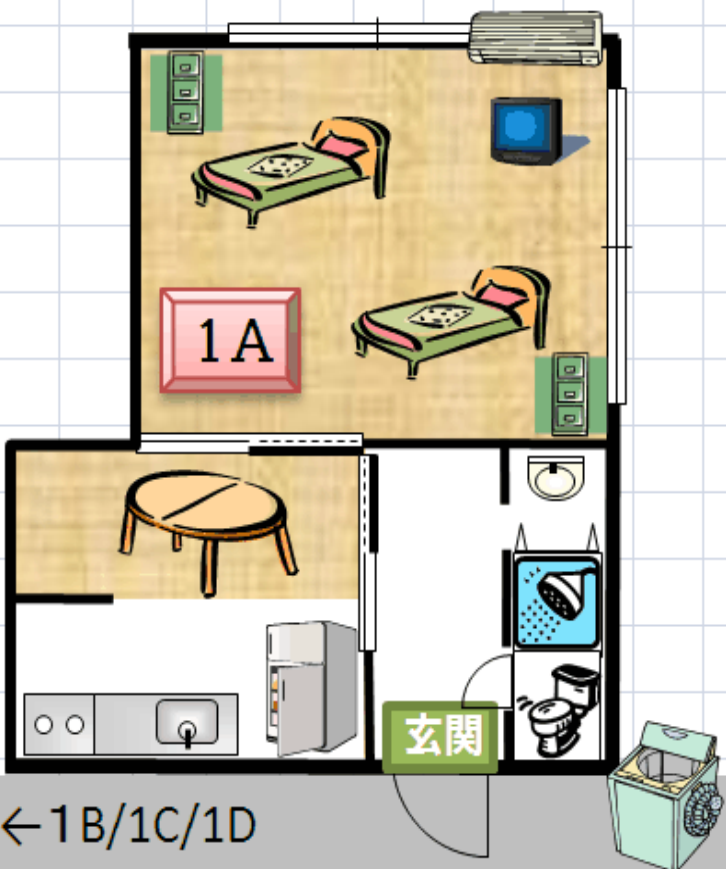


No.3 Chihiro II (1/2F)

❖ period of contract - enter in Apl./Oct. : every 6 months
 - enter in Jul./Jan. : 3 months + 6 months



Common equipments	Individual equipment
kitchen	bed(※1)
shower	bookshelf
rest room	
lavatory	
refrigerator	
television	
desk/chair	
air conditioner	
washing machine	

※1:Not include bedding.

It repays it 'Full amount' if there is no incompleteness in the cleaning etc. at leaving.

Address	3-10-3, arata-cho, hyogo-ku,KOBE
Closest station to the school	Subway [OKURAYAMA] 15 minutes(bicycle)
Internet	Wireless LAN(free)
about bicycle	It is a rental as for a specified bicycle. (¥500/month)

room No.	area	deposit	rent (/month)	utilities	fire insurance	persons
1A	20㎡	¥40,000	¥40,000	¥5,000	¥4,000	1
1A	20㎡	¥30,000	¥30,000	¥5,000	¥4,000	2
1A	20㎡	¥20,000	¥20,000	¥5,000	¥4,000	3
◆NOTE	・ When the utility bill of one month exceeds 5,000 yen of the fixed amount, actual expenses might be claimed. ・ Short stay(1/2/3 month) : Utilities ¥8,000/month					